

# Warehouse for Sale

712 West Cherry Street

Jesup, Wayne County, GA 31545



## Property Highlights:

- Approximately 20,122 SF total, with 1,950±SF finished office/retail space.
- Includes approximately 9,500 SF previously used for refrigeration space.
- Two dock-high roll-up doors; 2 sliding dock-high doors with covered, raised loading dock. Clear height 8'-18'.
- Tax ID# J17-29
- Site Size: 1.951± Acres
- Zoned BI (General Commercial)
- Located in Jesup, Wayne County, Georgia at the north-west corner of West Cherry Street & 5th Street, approximately 40 miles northwest of Brunswick and 65 miles southwest of Savannah.
- Asking Price: ~~\$325,000~~ **Reduced to \$199,900!!**



**Russell Sweat**

Driggers Commercial Group, Inc.

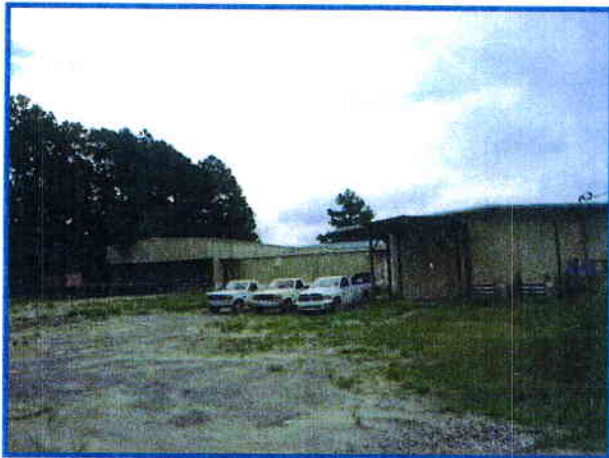
912-634-5900

912-269-4695

rsweat@driggerscommercial.com



## Property Photos



Information is deemed from reliable sources. No warranty, expressed or implied, is made as to its accuracy.



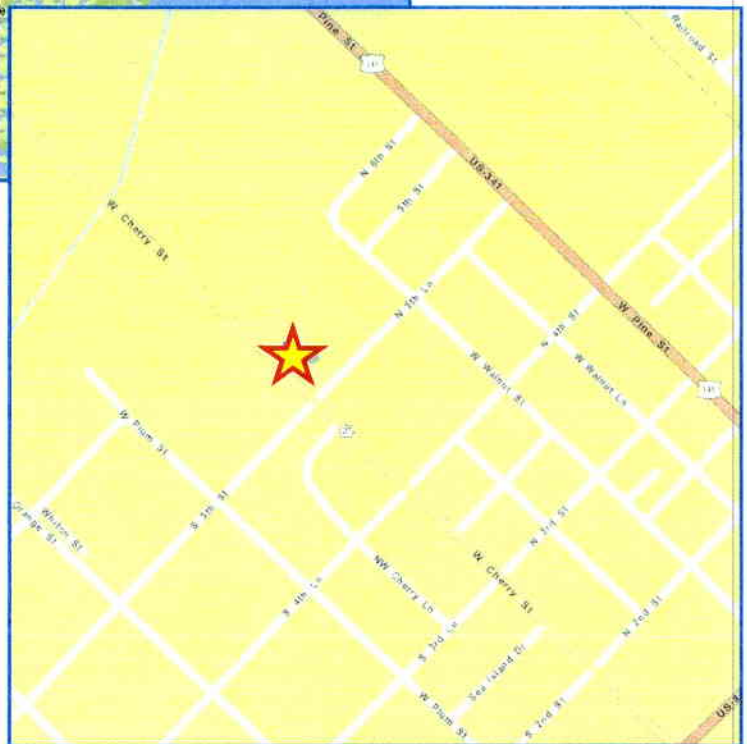
## Property Photos



Information is deemed from reliable sources. No warranty, expressed or implied, is made as to its accuracy.



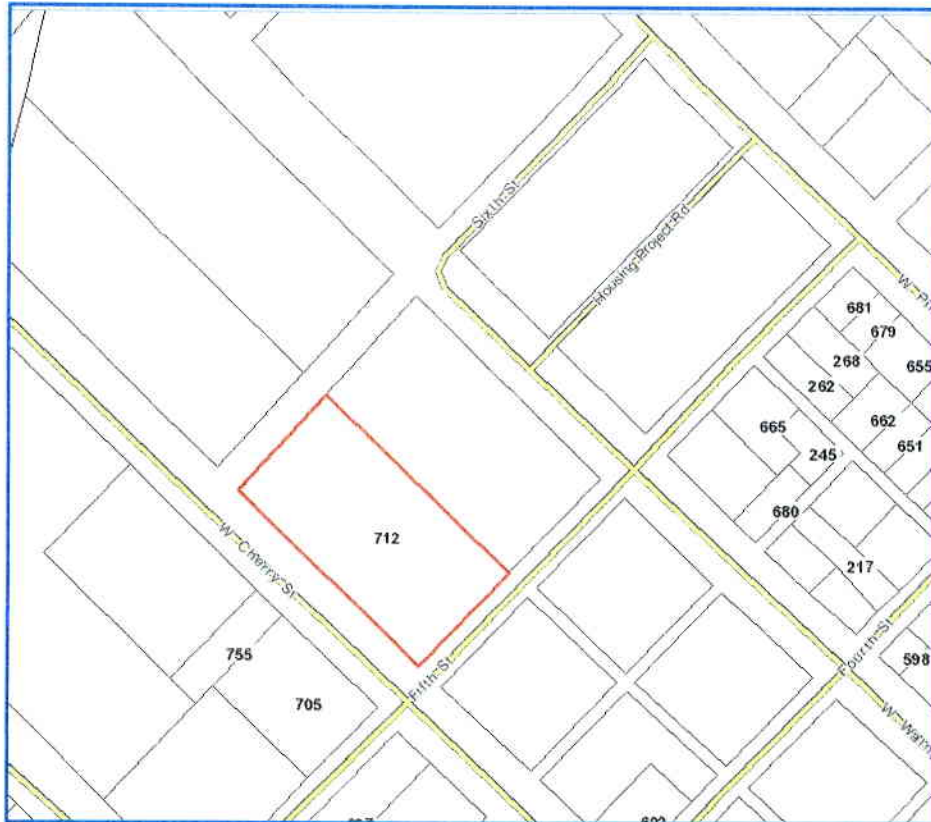
## Area & Neighborhood Maps



Information is deemed from reliable sources. No warranty, expressed or implied, is made as to its accuracy.

Driggers Commercial Group, Inc. | [www.driggerscommercial.com](http://www.driggerscommercial.com)  
6300 Powers Ferry Road, Suite 600, Atlanta, GA 30339  
2487 Demere Road, Suite 200, St. Simons Island, GA 31522

## Tax Plat



Information is deemed from reliable sources. No warranty, expressed or implied, is made as to its accuracy.